

Incasso swivel armchair with wooden legs

by Archirivolto Design

A highly customizable armchair, from the seat to the base, the color and even the material. Designed by Archirivolto Design.

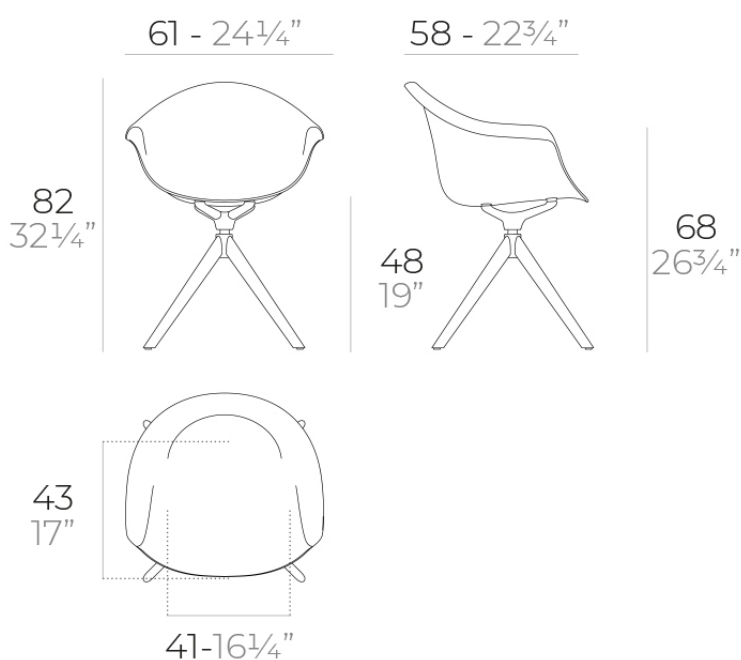


Info

Description

Made from polypropylene and reinforced with fiberglass manufactured by gas injection. Available in various colors. Suitable for indoor and outdoor use.

Weight: 9.3 Kg

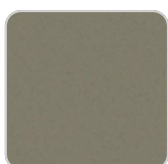


INCASSO Sillón giratorio madera
INCASSO Wooden swivel Armchair

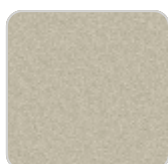
Finishes

finishes

BASIC PP
Ref. 56032



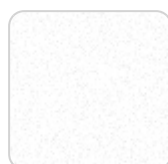
tortora



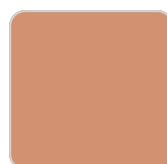
ecru



black



white



melon

Available in various colors

legs

LEGS
Ref. 65055E



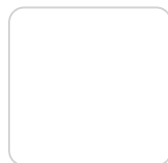
negro wood 2



negro wood 1



white wood 2



white wood 1

Ambients

